

Galerie XII Los Angeles

PRESS RELEASE

# TAULÉ

## INSULA LUX



Espalmador, 2016, Oil on canvas, 40 x 40 in

**JUNE 29 – SEPT. 7, 2019**  
OPENING SATURDAY JUNE 29, 5-7pm

# TAULÉ

## INSULA LUX

INSULA LUX: THE EXHIBITION	p.3-4
ARTIST STATEMENT	p. 5
ABOUT THE WORKS	p. 6
BIOGRAPHICAL ELEMENTS	p. 7
PRACTICAL INFORMATION	p. 8

**JUNE 29 – SEPT. 7, 2019**  
**OPENING SATURDAY JUNE 29, 5-7pm**

## INSULA LUX THE EXHIBITION

Following the recent exhibition at the Chanel Nexus Hall, Tokyo, this show will include oil paintings as well as an array of astonishing Type-C prints with hand-applied oil paint, making each work unique.



Carrelage, 1999 (2018), Oil on C-print, 15 x 19 in

Renowned for his chiaroscuro, Taulé's game is played between light and shadows in highly structured spaces, opening up entirely new perspectives. At the center of the image, a fountain of light draws the eye. Taulé paints in oil directly on the photographic print: erasing a character here, adding an imaginary perspective there, and then opening a door into an ethereal garden of his imagination.

## INSULA LUX THE EXHIBITION

After the multi-institution exhibition *Interior* (2016) in Paris, joined by friends Christian Boltanski, Jean-Claude Carrière, Sarah Moon and Erró, *Insula Lux* marks a new stage in Taulé's oeuvre. Darkness fades; the light arrives and catches the eye. Taulé's work explores the relationships between light and shadow, interior and exterior, presence and absence, showing spaces plunged into darkness from which light beams emanate, illuminating scenes that are sometimes populated by individuals—isolated and lonely—but most often empty of any presence.



Cache-cache, 2016 (2018), Oil on C-print, 19 x 15 in

## ARTIST STATEMENT

*My images, paintings and photographs, are closely related and I have trouble separating them. The views are fixed, they have no movement and stand outside time, thus awakening a pure dialogue between gaze and space. Arrested in the present of the image, these large empty spaces are a future in progress. They call for action. That's why I consider the viewer to be an integral part of my work: it's up to him or her to « dramatize » the scene through their gaze.*

*My latest works, entitled INSULA LUX, are visions of the Formentera Island where I have lived since 1970; the island is my source of inspiration: the idea of the coast, the border through which I try to reach the limits, is fully realized.*

Mimosas, 2016 (2018), Oil on C-print



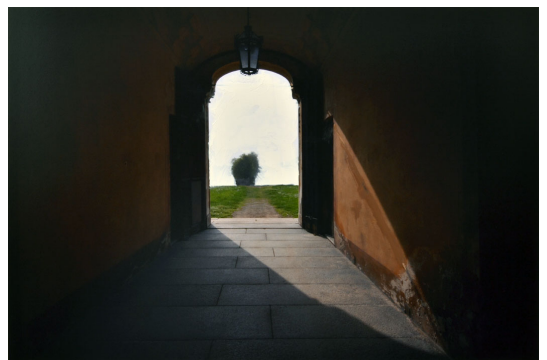
*For me, the sea and the coast are a threshold, a portal which leads from the visible to the invisible. On Formentera, at the edge of an inner lake near the studio where I paint, stands the megalithic monument of Ca Na Costa. For 4000 years, it has stood as a cosmic clock and a calendar. From there, every day at sunset, I see a small island with seven freshwater springs emerging at the center of the lake. Other landscapes also appeal to my eye with the same power. I would like to introduce the viewer to all these places, to make him an accomplice, to stand by my side and witness the secret scenes that take place there.*

## ABOUT THE WORKS

While the photographs presented in this exhibition were taken during the 1970s and onwards, there is no separation in Taulé's work between photography and painting. Originating as working tools allowing Taulé to capture the space and the light in order to prepare his paintings, the photographs have become works in their own right. What is more, he has found an adapted technique for his "augmented" photographs: the touches of paint on the print emphasize their phantasmatic nature and illusory power.



Figée dans l'instant, 1977 (2018)



Les rideaux, 2016 (2018)

Each photograph comes in an edition of 7, all sizes and techniques included. The « augmented » prints with oil paints are included in this edition, though each are essentially unique.

C-prints with hand-applied oil paint, size 15 x 18 inches, mounted on aluminum.



Marécage, 2016

The paintings of the INSULA LUX series in the exhibition use photographs as a visual support. However reality holds little interest for Taulé. He seeks above all to create an alternate reality that is made of dream, part surrealism, part Narrative Figuration. Oil on canvas, 40 x 40 inches.

## BIOGRAPHICAL ELEMENTS

Taulé was born in 1945 in Sabadell, near Barcelona. His father imparted the taste for painting to Taulé as a boy. He went on to study architecture in Barcelona. In 1965, he discovered Paris. It was Sartre's Paris, the year of Le Corbusier's death and the end of Chandigarh, the French Cinematheque and Antonioni's films. The exuberant artistic life of the city at that particular time made him wish to return. From then on, he shared his life between Formentera and Paris



Photo: Sarah Moon

After his first exhibition in Paris at the galerie Mathias Fels in 1975, he went on to hold seventy-five solo exhibitions and participate in over two hundred group shows worldwide. Taulé's work has been the subject of numerous retrospectives.

In 1981, he met Julio Cortázar, who wrote the novella *Fin de etapa* for him. In 1983, he was named Chevalier de l'Ordre des Arts et des Lettres by the French Minister for Culture Jack Lang.

From 1983 onwards, Taulé undertook stage design, for Rudolf Nureyev in Paris at the Palais Garnier and in New York at the Metropolitan Opera, at the Samuel Beckett Theater for Nathalie Sarraute and Glenn Close, in Madrid at Centro Dramatico, as well as other theaters in Barcelona and Venice.

Taulé will have a solo show of surrealist paintings at Fundacio Palau (Catalogna) from June 22<sup>nd</sup> to Dec. 31<sup>st</sup>, 2019,

Taulé's studio is located in Malakoff, France. His works are featured in major private collections and major international public institutions in the United States, Japan, China, France, and Spain.

## SELECTED PUBLIC COLLECTIONS

Centre national d'art contemporain, Paris  
Musée d'art moderne de la ville de Paris  
MACBA, Barcelona, Spain  
Nexus Hall Chanel, Tokyo, Japan  
Hastings Foundation, New York  
Generalitat de Catalunya, Barcelona  
Museu de la Diputacio, Barcelona  
Fondazione Augusto Rancibio, Milan, Italy  
Maison de la culture, Grenoble, France  
Mairie de Montrouge, France  
Fonds national d'art contemporain, France  
Maison de la culture du Havre, France  
Mairie de Villeurbanne, France  
Consell Insular de Formentera, Spain  
Fundation « La Caixa », Barcelona Banc de Sabadell  
Caixa d'Estalvis de Sabadell  
Musée de Besançon, France  
Musée de Pau, France  
Museu art 2000, Torroella de Montgri,  
Tour d'argent, Tokyo  
Villa Tamaris centre d'art, La Seyne sur Mer  
Fundació Stämpfli, Sitges, Barcelona  
Fundacio Banc de Sabadell, Spain  
Academia de Belles Arts,, Sabadell, Spain  
Maison Elsa Triolet-Aragon France

**Contact us for more information and for  
Press images:**

- Douglas Marshall, Los Angeles:  
323 917 5106  
[la@galeriexii.com](mailto:la@galeriexii.com)
- Valerie-Anne Giscard d'Estaing, Paris:  
06 08 96 54 60  
[vagiscard@galeriexii.com](mailto:vagiscard@galeriexii.com)